

WHY CHOOSE GEOGRAPHY AS A GCSE?

- Understanding geography helps us make sense of current and historical events, whether of economic, political, or social importance.
- Gain a deeper understanding of the world you live in, exploring the relationships between human activity and the natural environment. This is even more important in a rapidly changing world.
- Learn about current global issues affecting the planet and it's people exploring social, economic and environmental issues.
- To know the importance of your actions as global citizens to create a sustainable planet for future generations.
- Geography is an all encompassing subject with links to different subjects, incorporating themes related to business studies, science and history.
- It's a good choice if you are particularly interested in careers related to geography as well as science, business and engineering.

CAREERS IN GEOGRAPHY

Renewable energy engineer

Coastal engineer

Agricultural biotechnology

Environmental engineer

Flood risk management

Climate change analyst

Landscape architect

Travel and tourism

Structural engineering

International relations

Aid worker

Town planner

Pollution analyst

Weather presenter

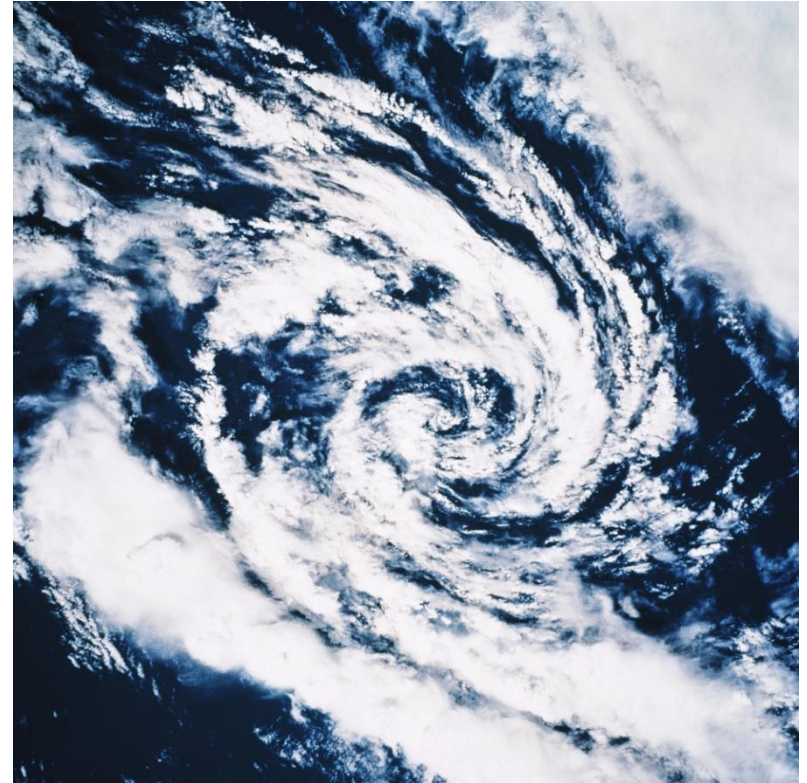
LEISURE, TRAVEL AND CULTURE

- ▶ **Are you interested in discovering, exploring and promoting different places, cultures or sports?**
- ▶ Sports venue manager
- ▶ Event manager
- ▶ Travel or tour operator
- ▶ Youth and community officer
- ▶ Museum educator



PHYSICAL SYSTEMS

- ▶ Do you enjoy being in the landscape and working with the natural environment?
- ▶ Coastal engineer
- ▶ Flood protection officer
- ▶ Weather presenter
- ▶ Environmental consultant



ECONOMIC WORLD

- ▶ Do you want to make key decisions that shape the commercial world?
- ▶ Lawyer
- ▶ Retailer
- ▶ Accountant
- ▶ Financial analyst



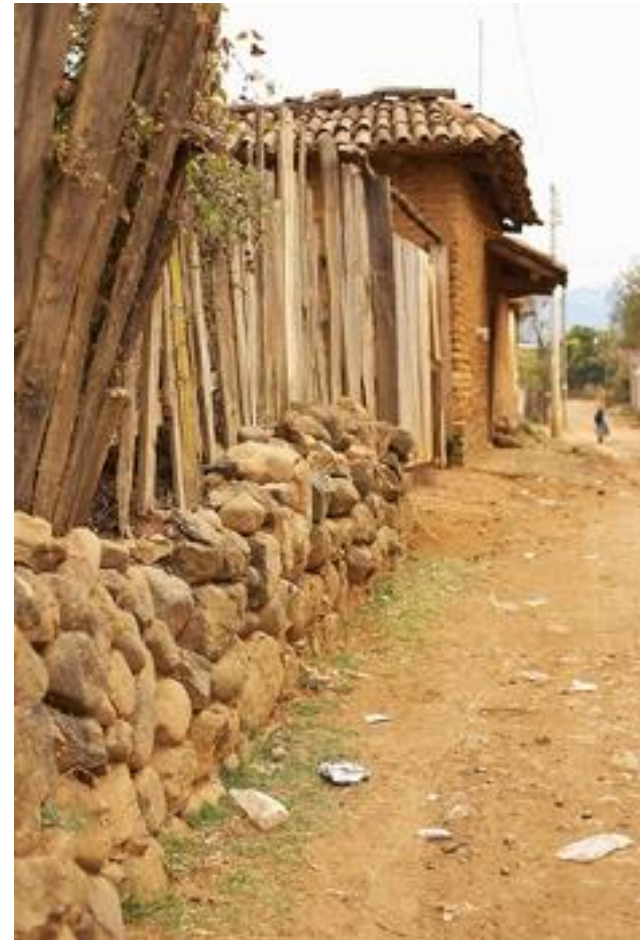
ANTONY- RETAIL LOCATION ANALYST



I am currently working for a large retailer doing location planning. This involved plotting store locations and customer details onto a digital map.

DEVELOPMENT AND GLOBAL ISSUES

- ▶ Are you interested in world events? Do you want to work towards improving social inequality across the globe?
- ▶ Diplomat
- ▶ Overseas volunteer
- ▶ Aid worker
- ▶ Charity co-ordinator



ENVIRONMENT AND SUSTAINABILITY

- ▶ Do you care about the future of the planet?
- ▶ Resource manager
- ▶ Renewable energy engineering
- ▶ Recycling officer
- ▶ Forestry manager
- ▶ Cycle route planner



THE DEMAND FOR GREEN ENGINEERING TODAY PROVIDES MANY CAREER OPPORTUNITIES

- Green engineering is a broad field. These engineers help design efficient and budget friendly renewable energy.
- They can work in any sector where things need to be built and powered. Almost every industry, from farming to manufacturing to commercial development to real estate will benefit from the help of a green engineer.
- Environmental engineering includes engineers who use chemistry, biology, and soil science together with principles of engineering to develop solutions that address environmental problems.
- Another interesting area is green biotechnology. Biotechnology refers to the industrial use of living organisms (or parts of living organisms) to produce foods, drugs, or other products.
- There are plenty of career choices in green design: architects, landscapers and urban planners.

MATT – CARBON BUDGETS



Our project is developing ideas for introducing a personal carbon allocation, which would give each of us an incentive to reduce greenhouse gas emissions.

WHAT DO WE STUDY AT GCSE?

GCSE Geography Exam board: AQA

Paper 1: Living with the physical environment

1.1 The challenge of natural hazards (33 marks)

- Natural hazards
- Tectonic hazards
- Weather hazards
- Climate change

1.2 The living world (25 marks)

- Ecosystems
- Tropical Rainforests **Choose 1**
- Hot deserts OR cold environments

1.3 Physical landscapes in the UK (30 marks)

- UK physical landscapes
- Coastal landscapes
- River landscapes **Choose 2**
- Glacial landscapes

Paper 2: Challenges in the human environment

2.1 Urban issues and challenges (33 marks)

2.2 The changing economic world (30 marks)

2.3 The challenge of resource management (25 marks)

- resource management
- food
- water **Choose 1**
- energy

Paper 3: Geographical applications

3.1 Issue evaluation (37 marks)

Critical thinking, problem-solving, geographical skills and applied knowledge and understanding derived from secondary sources.

3.2 Fieldwork (39 marks)

Exam questions based on two geographical enquiries.



FIELDWORK OPPORTUNITIES

- Fieldwork is an important aspect of geography. At GCSE you are examined on two fieldwork investigations.
- It provides a 'real-world' opportunity for students to develop and extend their geographical thinking; it adds value to classroom experiences.
- Good fieldwork encourages geographical enquiry and frequently can lead to higher-order thinking and learning.
- Urban fieldwork is in Birmingham City Centre
- Physical fieldwork is conducted in Carding Mill Valley in Shropshire

FREQUENTLY ASKED QUESTIONS

- Is geography GCSE hard?
- Is there a lot of writing?
- What support is available for students?
- Do we have any exams in year 10?
- Are there any residential trips or overnight stays?
- Is there any coursework?
- Is there homework?